



GOPOWEREV

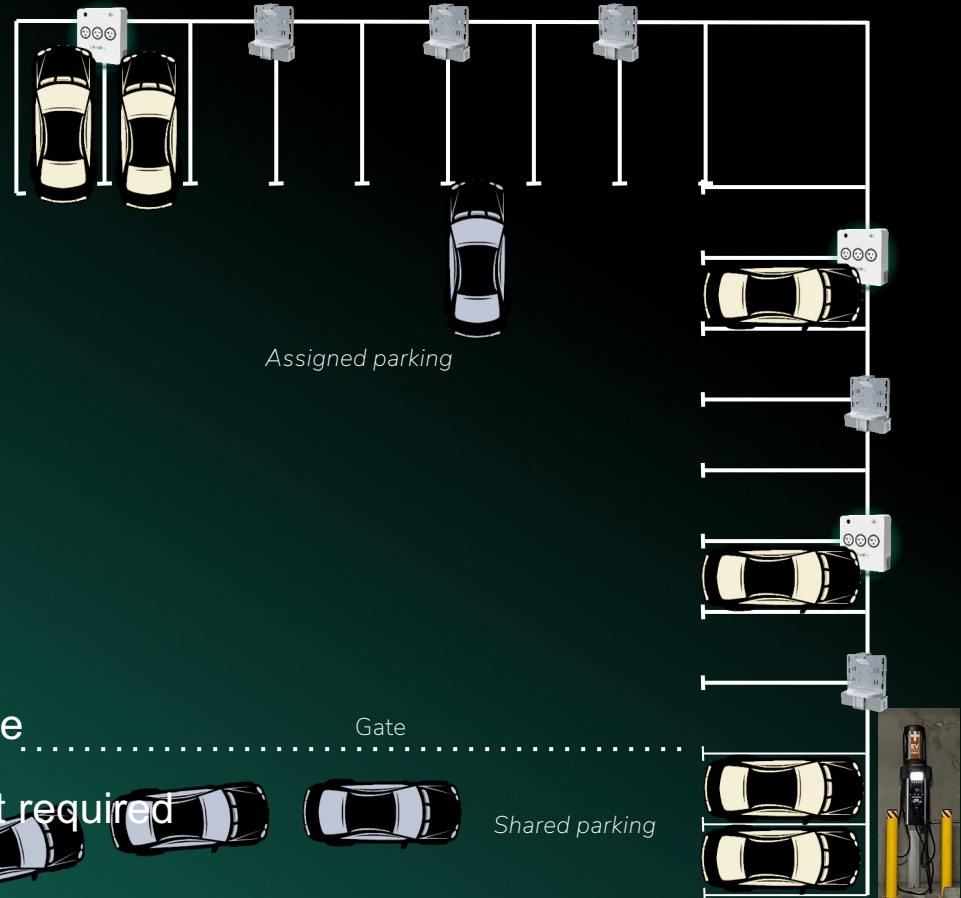
Multi-Family & Workplace EV Charging

# Right Sized EV Charging

# Flip the model for long dwell sites! Apartments, Condominiums & Workplace

Older Shared Model in assigned/dedicated parking spaces

- Dedicated availability, anxiety you park
- Tension between users
- Prioritizes use of lowest rates
- Idle fees
- Request your charge, plug it in, walk away
- Difficult/Expensive to scale up
- Enable more parking spaces
- Users pay for the energy they use
- Built in future expense, no permit required

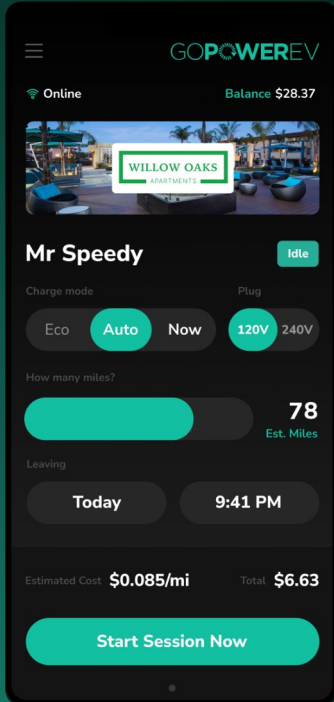


# Level 1 (120V) & Integrated LowPower Level 2 (240V@20A)



# Resident interface to GPEV -- Saves Residents Time & Money

## Request a charging session via the Resident App



### Eco

Get lowest electricity rate.

### Auto

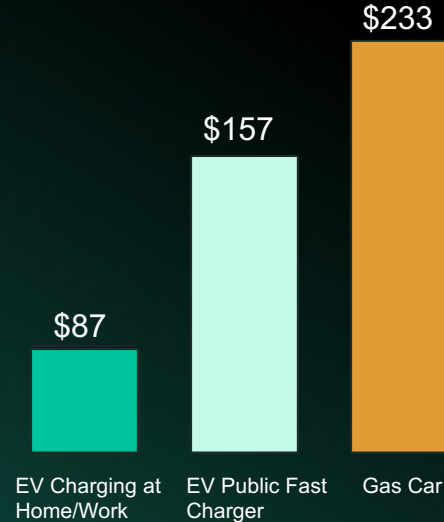
Lowest rate and requested range by time of departure.

### Now

Charge immediately.

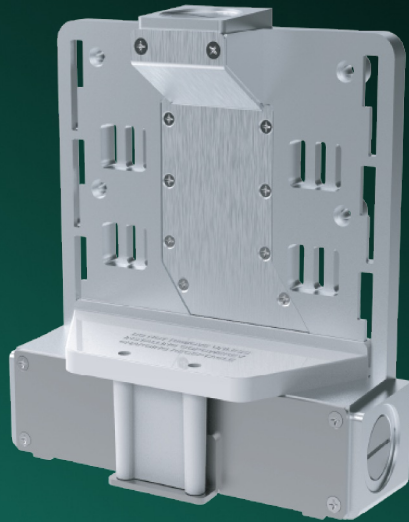
## Save with long dwell Charging

Monthly Spend or 1000 Miles:



# Modular Solution Means Easy Install & Maintenance

Upgrade spaces as needed



**EVReadiBase**  
Wired & Inspected



**PowerPort3**  
Live

## Incentive Examples & Charging as a Service



### Peninsula Clean Energy

<https://www.peninsulacleanenergy.com/ev-ready-incentives/>

Workplace :: L1/L2 Outlets = \$2,000/port NO CAP

Workplace :: L2 EVSE = \$5K/port max 75% actual expense & max \$90k



### Fix it myself ... or

Outsource EV charging like your pool, landscaping, laundry room, etc.



### Variable/random repair costs vs. monthly fee

Convert your variable / unpredictable repair costs to a recurring monthly fee



### Who are your employees going to call first

With GoPowerEV, most likely the first time you'll hear of an issue is from us.

# Items to consider in your EV charging partner



## Employees park once, no more moving

No sharing, eliminate conflicts, increases productivity



## Complete Installation & Ongoing Management

Charging As A Service -- Saves property managers time and reduces costs



## Priced for a whole garage vs a few spaces

Lower cost per parking space enabled = more spaces can add charging



## Load management & load balancing

The system monitors and manages its peak usage & which vehicles charge when



## Optimized Charging Rates

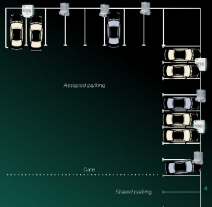
GoPowerEV delivers the lowest cost charge available



# ReCap

- Assigned / Dedicated EV parking spots are the most viable path forward for charging at scale
- **‘Slow charging’ is the best charging**; especially for existing / retrofit properties. It’s more compatible with existing electrical infrastructure
- GoPowerEV’s all-inclusive *Charging As A Service* matches the current trends for outsourcing O&M of specific facility functions
- Items to consider when adding EV Charging
  - Who will manage the project: SIG, Engineering, permits, etc.
  - Will I have to ‘true up’ my electrical bill
  - Who will maintain/fix the system


### Residents/Employees EV Charging



GPEV: Charging in assigned/dedicated parking spaces

- Dedicated port every time you park
- Prioritizes use of lowest rates
- Shortest amount of time waiting for your car to charge
- Covers more parking spaces

### Charging as a Service & Cost Recovery



- **Fix it myself ... or**  
Outsource EV charging like your pool, landscaping, laundry room, etc.
- **Variable/random repair costs vs. monthly fee**  
Collect your variable (variable) repair costs in a monthly fee
- **Who are your residents going to call first**  
With GoPowerEV, most likely the first line you'll hear of an issue is from us.
- **It's an Amenity, i.e. Landscaping, Pool, etc.**  
It increases the value of the property, here can go up.
- **It's a premium Amenity; charge for it**  
Event parking/rental additional fee for spots that have access to EV charging
- **Revenue Share**  
An increased rate of the electricity part may be able to go to the property

### Items to consider in your EV charging partner



- **Residents charge in their own space**  
No sharing, ultimate resident control
- **Complete Installation & Ongoing Management**  
Charge EVs & Service — Same provider manages the end-to-end costs
- **Priced for a whole garage vs a few spaces**  
Lower cost per parking spot needed — more spaces on total charge
- **Load management & load balancing**  
The system monitors and manages its peak usage & which vehicles charge when
- **Optimized Charging Rates**  
GoPowerEV covers the lowest cost charge available



# GOP<sup>WEREV</sup>

## Multi-Family & Workplace EV Charging

Mike.Weseloh@GoPowerEV.com  
Partnerships



*email me*